

Team Corporation
11591 Watertank Road
Burlington, WA 98233
(360) 757-8601
Fax: (360) 757-4401
sales@teamcorporation.com
www.teamcorporation.com

Team Corporation UK
Team Corporation UK Ltd
11 Old Ladies Court
High Street
Battle
East Sussex
TN33 0AH
United Kingdom
Tel: +44 (0) 1424 777004
Fax: +44 (0) 1424 777005
sales@teamcorporation.co.uk
service@teamcorporation.co.uk
www.teamcorporation.co.uk

Hydrostatic Spherical Couplings

The *Team* Hydrostatic Spherical Coupling transmits tensile and compressive forces while allowing angular misalignment.

Our Hydrostatic Spherical Coupling find applications in multi axis vibration, structural fatigue testing, and any situation where angular movement is required. Each coupling connects the vibration system (Hydraulic or Electrodynamic) to the table/test article, protecting the system from damage due to misalignment or angular motion.

Single and Double pivot couplings are available, in either 0.5 degree or 6 degree configurations. Our double pivot couplings allow for angular and lateral misalignment. Each spherical surface is hydrostatically lubricated for extremely high stiffness, zero backlash, and infinite life. *Team* Hydrostatic Spherical Couplings have excellent transmissibility to above 2000 Hz.

Features:

- Direct Load Path
- Eliminates Backlash
- Eliminates Friction
- Easy to Install
- Offers flexibility of Installation
- Low Maintenance, Long Life Product

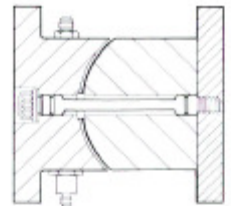
Applications:

- Multi-Axis Test Systems
- Custom Designed Test Rigs



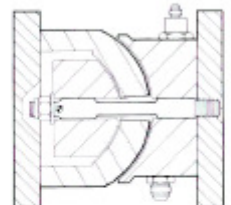
420.XX

Provides a single pivot with ± 0.5 degrees of rotation, which will allow for angular misalignment.



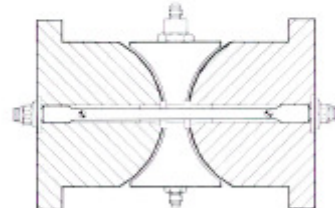
421.XX

Provides a single pivot with ± 6 degrees of rotation, which will allow for angular misalignment.



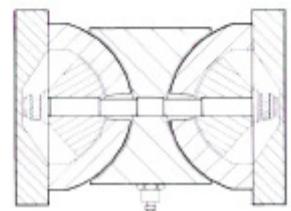
422.XX

Provides a double pivot, allowing correction for angular and lateral misalignment. Angular capability is ± 0.5 degrees at each pivot.



423.XX

Provides a double pivot, allowing correction for angular & lateral misalignment. Angular capability is ± 6 degrees at each pivot.



Sample Specifications

	A, mm	B, mm	C, mm	D, mm	E, mm	F, mm	Wt. kg
420.10	203.2	190.5			152.4	10.16	11.3
420.20	254.0	228.6			203.2	13.46	22.7
420.40	266.7	304.8			279.4	13.46	38.5
420.60	480.0	400.0			355.6	16.51	170
420.15	604.5	558.8	251.0	65.27	508.0	26.16	544
421.10	230.2	190.5			152.4	10.16	12.7
421.20	254.0	228.6			203.2	13.46	25.0
421.40	292.1	355.6	25.40	21.59	317.5	13.46	40.8
422.10	254.0	172.7	31.75	25.40	152.4	10.16	13.6
422.20	304.8	254.0			203.2	10.16	27.2
422.40	609.6	330.2			304.8	13.46	90.7
423.20	317.5	228.6	31.75	44.45	203.2	10.16	36.3
423.40	457.2	374.7			330.2	19.81	90.7

