

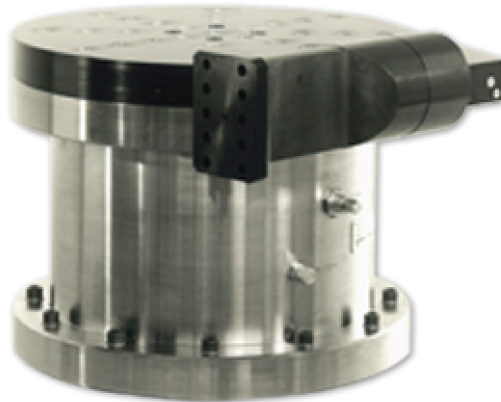
**Team Corporation**  
11591 Watertank Road  
Burlington, WA 98233  
(360) 757-8601  
Fax: (360) 757-4401  
[sales@teamcorporation.com](mailto:sales@teamcorporation.com)  
[www.teamcorporation.com](http://www.teamcorporation.com)

**Team Corporation UK**  
**Team Corporation UK Ltd**  
11 Old Ladies Court  
High Street  
Battle  
East Sussex  
TN33 0AH  
United Kingdom  
Tel: +44 (0) 1424 777004  
Fax: +44 (0) 1424 777005  
[sales@teamcorporation.co.uk](mailto:sales@teamcorporation.co.uk)  
[service@teamcorporation.co.uk](mailto:service@teamcorporation.co.uk)  
[www.teamcorporation.co.uk](http://www.teamcorporation.co.uk)

# R1900 Torsional Table

The R-1900 Torsional Table converts the linear vibration of a shaker into torsional vibration, thus expanding your shaker's capability to torsional vibration testing. It is the only way to achieve torsional vibration at frequencies above 1,000 hz. A typical use for the R-1900 is for torsional vibration studies of inertial guidance systems.

The Torsional Table has three hydrostatic bearings. One large journal bearing defines the axis of rotation, a thrust bearing carries the vertical static load, and a spherical drive coupling in the connecting arm allows for the angular rotation of the table. The drive arm bearing is 12 inches from the center of the rotation of the table. With that dimension you can calculate the angular acceleration knowing the shaker acceleration. Inserts in any desired pattern may be installed on the top mounting surface.



## Features:

- Customer specified insert pattern
- Extend existing linear shaker versatility
- Reaction bases callable to match existing shaker centerline

## Applications:

- Inertial guidance systems
- Rotational vibration tests of heavy payloads
- High frequency excitation\*
- Rotary vibration fatigue tests

\*shaker dependent

# Specifications

Model	R-1900
Moving Wt. (connecting arm)	14 lbs
Moving Mass	100 lbs.
Radius of Gyration*	4.32 in.
Mounting Surface	19 in. dia.
Rated Loads	
Vertical (compression)	8,000 lbs.
Connecting Arm	6,000 lbs.
Shipping Wt.	1,000 lbs.

\*Of Top Plate & bearing Shaft

