

**Engineered
vibration testing
solutions for
improved
product quality.**

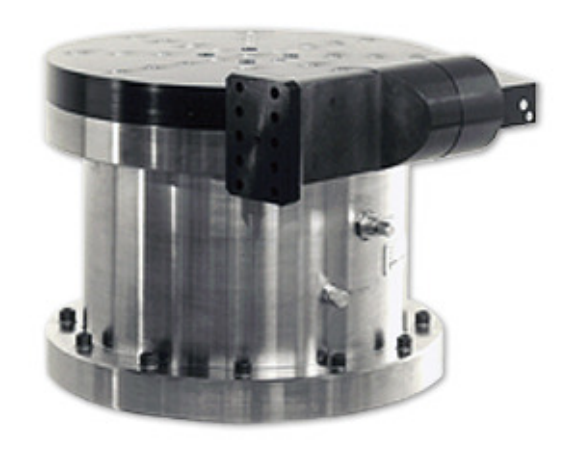
Team Corporation
11591 Watertank Road
Burlington, WA 98233
Tel: (360) 757-8601
Fax: (360) 757-4401
sales@teamcorporation.com
www.teamcorporation.com

Team Corporation UK
Team Corporation UK Ltd
11 Old Ladies Court
High Street
Battle
East Sussex
TN33 0AH
United Kingdom
Tel: +44 (0) 1424 777004
Fax: +44 (0) 1424 777005
sales@teamcorporation.co.uk
service@teamcorporation.co.uk
www.teamcorporation.co.uk

R1900 Torsional Table

The R-1900 Torsional Table converts the linear vibration of a shaker into torsional vibration, thus expanding your shaker's capability to torsional vibration testing. It is the only way to achieve torsional vibration at frequencies above 1,000 hz. A typical use for the R-1900 is for torsional vibration studies of inertial guidance systems.

The Torsional Table has three hydrostatic bearings. One large journal bearing defines the axis of rotation, a thrust bearing carries the vertical static load, and a spherical drive coupling in the connecting arm allows for the angular rotation of the table. The drive arm bearing is 12 inches from the center of the rotation of the table. With that dimension you can calculate the angular acceleration knowing the shaker acceleration. Inserts in any desired pattern may be installed on the top mounting surface.



Features:

- Customer specified insert pattern
- Extend existing linear shaker versatility
- Reaction bases adjustable to match existing shaker centerline

Applications:

- Inertial guidance systems
- Rotational vibration tests of heavy payloads
- High frequency excitation*
- Rotary vibration fatigue tests

*shaker dependent

